

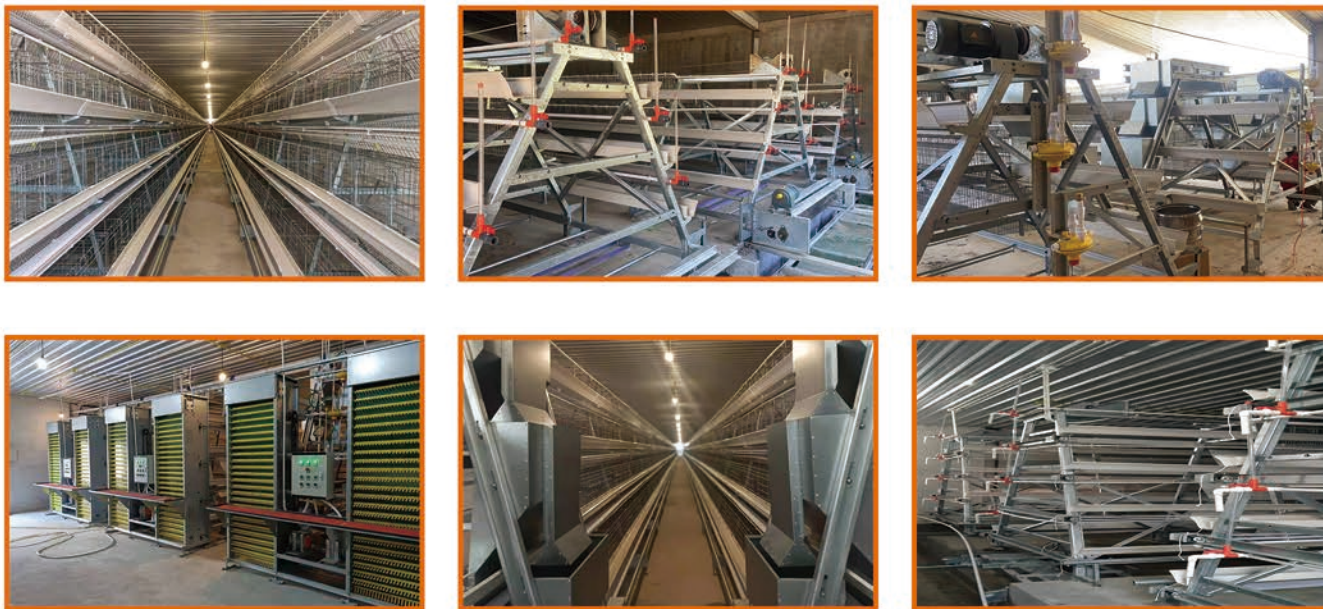
A TYPE LAYER BREEDING EQUIPMENT 阶梯式蛋鸡设备

◆设备特点

- ① 阶梯式笼架结构稳定，坚固耐用，全套使用热镀锌材质，使用寿命15-20年。
- ① 自动喂水、饮水、清粪、捡蛋，集中管理、自动控制、节约能耗。
- ① 自动行车喂料系统结构设计合理，可根据鸡的采食量来调整匀料器高度，调节喂料量。
- ① 自动集蛋系统提高效率，节省劳动力，降低破蛋率。
- ① 采用刮板式清粪，清洁高效，减少环境污染。
- ① 最新研制的塑料食槽结构合理，节约饲料，经济耐用。
- ① 选用耐磨耐用、使用寿命长的集蛋带。

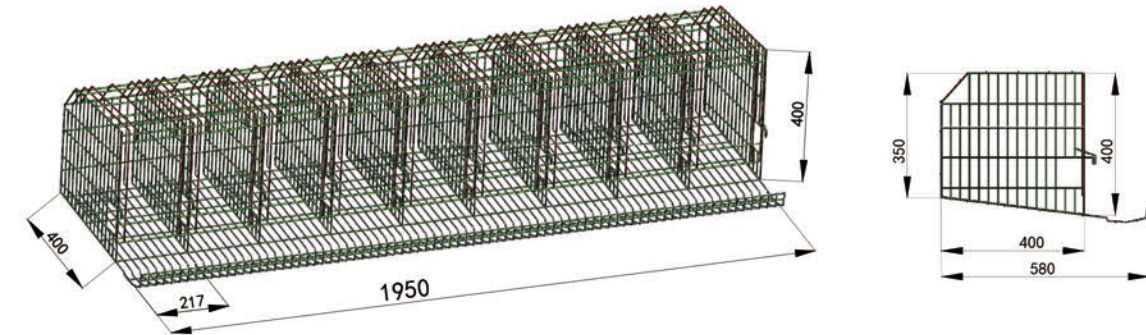
◆Introduction of product

- ① Stable structure and hot-dip galvanized technology can ensure service life of 15-20 years.
- ① Automatic feeding, egg collecting and manure cleaning can save energy and labor costs.
- ① The feed quantity provided to layers can be adjusted.
- ① Egg collecting system can save labor cost and increase working efficiency.
- ① The manure cleaning system is easy to use and maintain.
- ① The newly-designed feed trough can help to save feed costs.
- ① The egg conveying belt is abrasion resistant and has long service life.



型号① 阶梯式原种鸡笼设备三维图

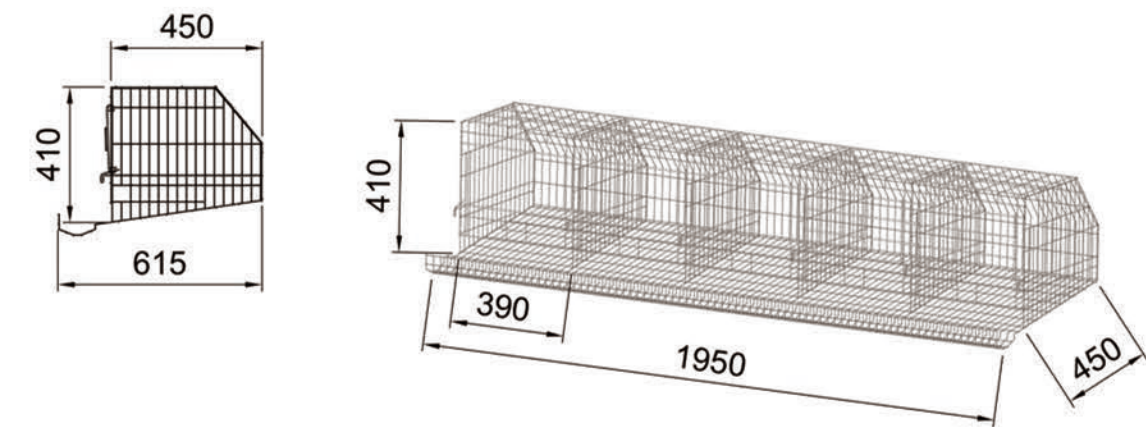
Model 1 3D diagram of A type egg breeder cage



占位面积 (cm ²) average area/bird	养殖数量 (羽/笼) birds/cage	笼长 (mm) cage length	笼深 (mm) cage width	笼高 (mm) cage height
876	9	1950	400	400

型号② 阶梯式蛋鸡设备三维图

Model 2 3D diagram of A type layer cage



占位面积 (cm ²) average area/bird	养殖数量 (羽/笼) birds/cage	笼长 (mm) cage length	笼深 (mm) cage width	笼高 (mm) cage height
440	20	1950	450	410